



The Royal Wolverhampton
NHS Trust



Your local children's hospice

ROYAL WOLVERHAMPTON TRUST

SWITCHBOARD: 01902 307999
WARD A21: 01902 695041
PAU: 01902 695047

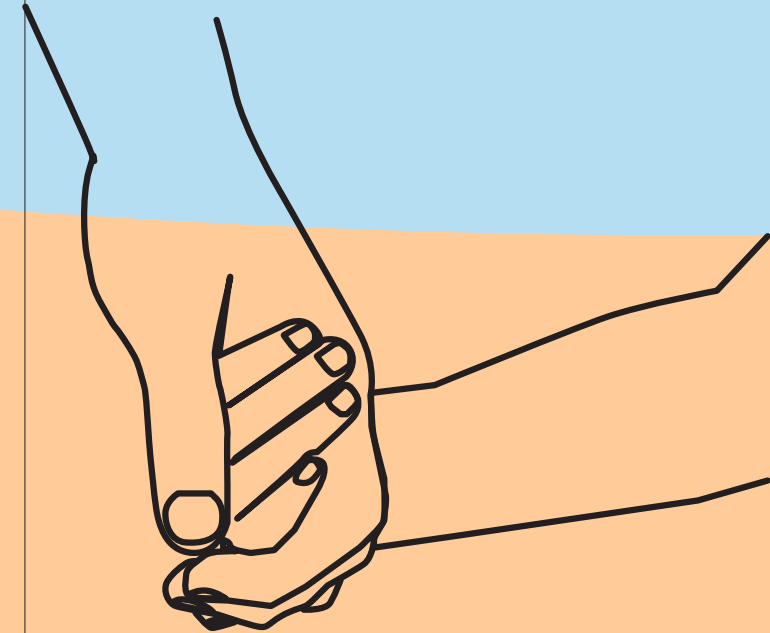
COMMUNITY CHILDRENS NURSING TEAM

HOURS: 08:30 - 17:00
CCN: 01902 444700

ACORNS CHILDREN'S HOSPICE

TEL: 01922 422500

Paediatric Palliative and End-of-Life Care at Home



**Supporting you and your child to
receive care in your place of choice.**



**Birmingham Women's
and Children's**
NHS Foundation Trust

Paediatric Palliative / End-of-life care at home.

The service is for children and their families when a child is thought to be in the last weeks or days of life.

The palliative care team for end-of-life care at home is an extended service to ensure you and your child have access to appropriate support 24 hours a day.

The specialist palliative care team is made up of professionals who are employed by Acorns and Royal Wolverhampton NHS Trust. With support from Paediatric Palliative Care Consultants.

What can you expect from us?

The team will do their best to achieve the child and family wishes to receive palliative end of life care at home. In some circumstances this may not be possible, in which case the team would support care being transferred to Acorns or the Hospital in liaison with the family. Our focus will be on maintaining your child's comfort and dignity

The team is committed to family centred care and acknowledge that every family is unique. We will work with your family to support informed decision making.



Things the team will discuss with you;

- Who will provide support at home and what this will look like.
- What happens if your child's condition changes suddenly, including parallel planning.
- Wishes – using a Child & Young Person's Advanced Care Plan (CYACP). This will help the team understand treatment decisions as well as your wishes for care after death.
- Equipment that may be needed – for example hospital bed, pressure relieving mattress, oxygen.
- Symptoms – the team will discuss possible symptoms and plan symptom management. Not all these symptoms will occur, it is important to forward plan. Sometimes symptoms can escalate quickly and it can take time to get a good level of control.
- The team will tell you who to phone if you need to speak to someone for advice.
- Medicines and storage – the team will arrange for 'just in case' medications to be kept at home. Medications will need to be kept in a safe place out of the reach of children. You will be given a prescription chart for the nursing team. Medications will be checked and recorded by the nursing team.

Service can provide ;

- Regular patient review.
- Advice on managing symptoms face-face or via telephone, dependant on need at the time.
- Memory making
- Medication advice
- Medication administration.
- Referral for Equipment.
- Practical support.
- Emotional support.
- Sibling support.
- Support immediately after death.
- Ongoing post bereavement support and complimentary therapy.

Communication within the multi-disciplinary team.

Community and Hospital teams will be regularly updated.

Ambulance Service – The ambulance service will have been sent a copy of your CYACP. If you call an ambulance please give the ambulance crew your CYACP.

Your GP will be contacted and will be asked to visit you at home, your GP can help with prescriptions and access to other out of hour services.