

What is Moviprep

Each box contains 2 sealed plastic bags where each bag contains sachets A & B (1 dose).

Why?

Taking Moviprep before your appointment will give you a clean bowel. Unless told otherwise, start taking Moviprep on the day before your procedure.

Things to Expect

Frequent bowel movements within an hour of each dose.

Expect to go to the toilet 12-15 times during your preparation



Reporting of Side Effects

United Kingdom

If you get any side effects, talk to your doctor, pharmacist or nurse. This includes any possible side effects not listed in the package leaflet. You can also report side effects directly via the Yellow Card Scheme at www.mhra.gov.uk/yellowcard. By reporting side effects you can help provide more information on the safety of this medicine.

Ireland

If you get any side effects, talk to your doctor, pharmacist or nurse. This includes any possible side effects not listed in the package leaflet. You can also report side effects directly to the HPRA, via www.hpra.ie or by calling (01) 676 4971. By reporting side effects you can help provide more information on the safety of this medicine.

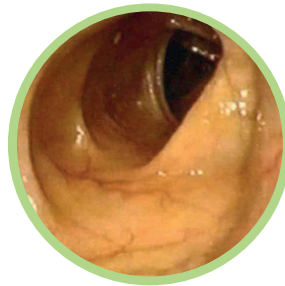
A patient information service from Norgine.

Norgine Pharmaceuticals Limited, Moorhall Road, Harefield, Middlesex UB9 6NS.

E-mail: medinfo@Norgine.com.

Tel: +44 (0) 1895 826 606.

Importance of Proper Cleansing

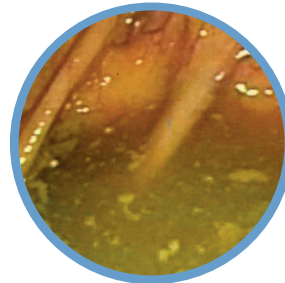


A clean bowel will allow for a clear view of its inner lining which is important for both accurate diagnosis and treatment.

Abnormal changes may be tiny, so even the smallest amount of faeces could potentially disguise something important.



If the bowel is not empty and clean enough, the procedure may have to be cancelled and repeated on another occasion at a later date.



Hints & Tips Patient Advice

It's strongly advised that **you drink an extra 500ml of clear fluids with each dose**. Continue drinking clear fluids to keep yourself hydrated until 2 hours before your procedure and then stop drinking, which may include:



Water



Clear soups (no bits)



Tea & Coffee (without milk)



Soft drinks (cordial - not blackcurrant)

..... **Do Not Take Alcohol**

Moviprep may be easier to take when:

- Drinking through a straw
- Adding cordial (to alter the flavour, but not blackcurrant as it will stain the bowel)
- It has been chilled once it has been made up

Further advice for patients:

- Using wet wipes after each bowel movement
- Use a barrier cream to prevent a 'sore bottom' for example: petroleum jelly

How to Prepare Moviprep

Please Repeat This for the Second Dose



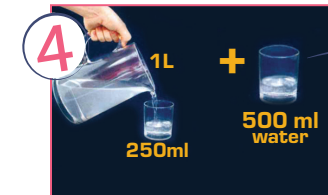
1 Empty 1 dose of sachet A & B into a jug



2 Add 1 litre of water (not chilled)



3 Stir until dissolved (clear or slightly hazy)

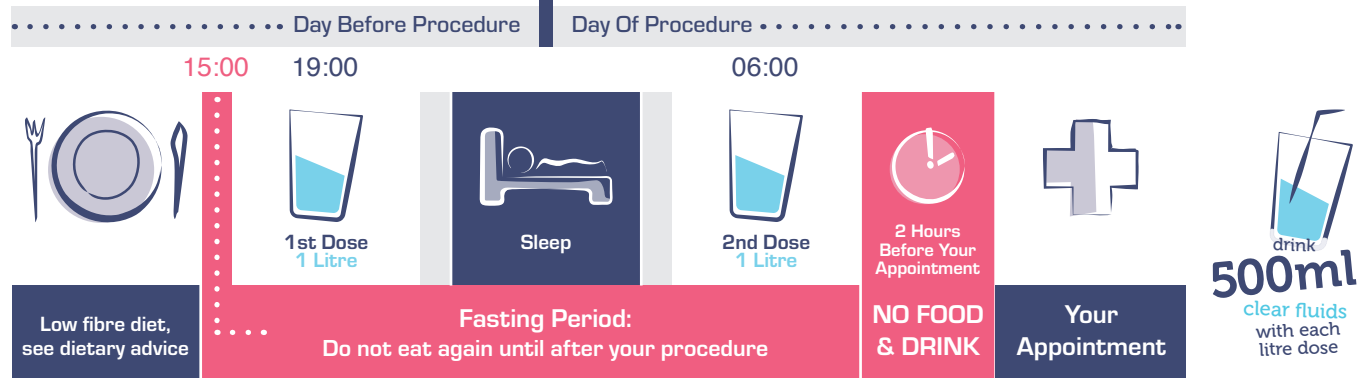


4 Every 15-30 minutes drink one glassful (250ml) until finished (over 1-2 hours)



When to Take Your Moviprep

Split Dose Overnight

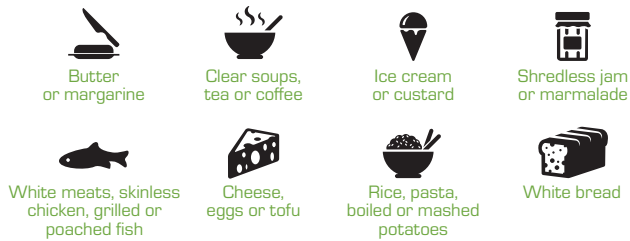


Hints & Advice on Taking Moviprep



Dietary Advice

..... Low Fibre Foods Which Are Preferred



..... High Fibre Foods Which Should Be Avoided



Advice for patients attending a Hospital Appointment

- If you have been prescribed a bowel preparation, it is important you **take the full bowel prep** as directed to reduce the chance of needing a repeat procedure.
- If you have developed symptoms, or tested positive for **COVID-19**, please ensure you contact the department for further advice **BEFORE** taking your bowel preparation.
- If you have been told to **self-isolate** e.g. due to close contact with an individual with COVID-19, please contact the department.
- We want to reassure you that the **NHS is here for you** and we have your safety in mind.
- Strict infection control measures are in place.
- Please take note of all signage and **follow any guidance given**. For example, lifts will have signs displaying the maximum number of occupants allowed inside at any one time.
- **Please clean your hands** with alcohol gel as soon as you arrive in the hospital. This will be available for your use.
- We have made some changes to our hospitals to reduce the risks so if you have visited before, you might find things are different.
- Once inside the hospital, please **observe social distancing** (outside your household) at all times – this includes in car parks, corridors, and waiting areas.

Afternoon Appointment

UKE-COR-PR-2000007
UKE-COR-PR-2000031

Code: UKE-COR-PR-2000003
Date of preparation: April 2020



MI_8225914_12/04/24_V_1